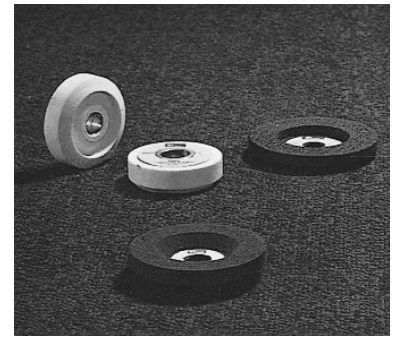
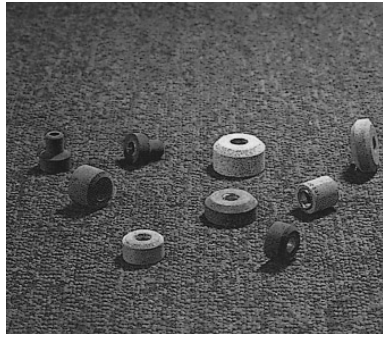
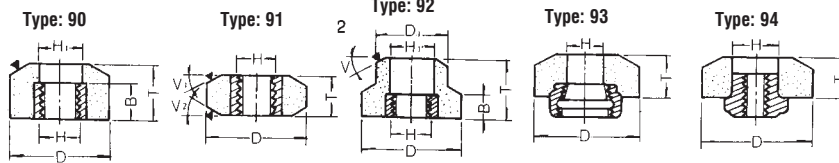
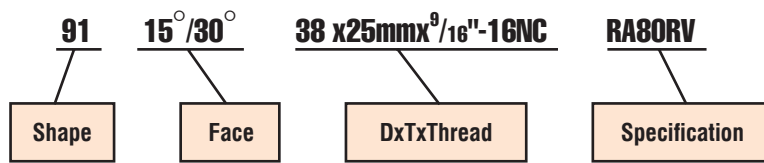


**KINIK** Valve seat, Valve Face & Valve End grinding wheels brings you a full assortment of replacement wheels for all major manufacturer equipment. Such as: B & D, Kwik-Way, Snap-on, Sioux. W & B. Knock-out.



**Valve Seat Grinding Wheels**

• How to Specify the Size & Spec.



• Standard Size

DxT		DxT	
22x20mm	7/8" x 3/4"	54 x 25mm	2-1/8" x 1"
25 x 22	1" x 7/8"	57 x 25	2-1/4" x 1"
28 x 25	1-1/8" x 1"	60 x 25	2-3/8" x 1"
30 x 25	1-3/16" x 1"	64 x 25	2-1/2" x 1"
32 x 25	1-1/4" x 1"	67 x 25	2-5/8" x 1"
35 x 25	1-3/8" x 1"	70 x 25	2-3/4" x 1"
38 x 25	1-1/2" x 1"	73 x 25	2-7/8" x 1"
42 x 25	1-5/8" x 1"	76 x 25	3" x 1"
45 x 25	1-3/4" x 1"	80 x 25	3-1/8" x 1"
48 x 25	1-7/8" x 1"	83 x 25	3-1/4" x 1"
51 x 25	2" x 1"	86 x 25	3-1/2" x 1"

• Recommendations

Application	Standard Spec.
For Steel: Rough Finish	RA80RV RA120SV
For Cast Iron: Rough Finish	C80PV C120PV
For Stellite	GC80NV

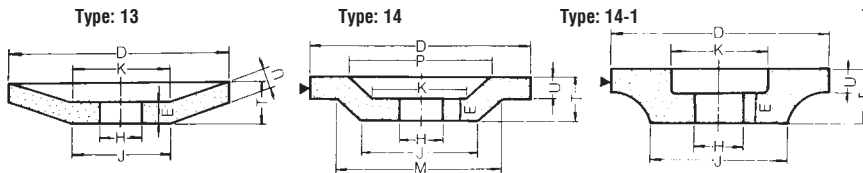
• Standard Bushing (Threads)

9/16"-16NC, 9/16"-16NCLH, 9/16"-18NF  
5/8"-11NC, 5/8"-18NF, 5/8"-18NFLH  
11/16"-16NCLH, 11/16"-18NF, 13/16"-13NC

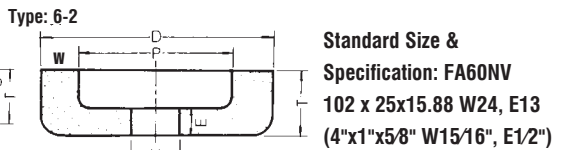
• Standard Wheel Face Angles

15°, 30°, 45°, 90° (Flat)

**Valve Face Grinding Wheels (Type 13, 14 & 14-1)**



**Valve End (Butt) Grinding Wheels (Type 6-2)**



Shape	Wheel Sizes									Wheel Sizes									Available Specification
	D	T	U	E	J	K	P	M	H	D	T	U	E	J	K	P	M	H	
13	100	25	13	13	54	54				4"	1"	1/2"	1/2"	2-1/8"	2-1/8"				5/8"
	127	25	13	13	64	64				5"	1"	1/2"	1/2"	2-1/2"	2-1/2"				
	152	32	6	16	86	86			15.88	6"	1-1/4"	1/4"	5/8"	3-3/8"	3-3/8"				
14	115	27	13	13	54	50	86	86	19.05	4-1/2"	1-1/8"	1/2"	1/2"	2-1/8"	2"	3-3/8"	3-3/8"	3/4"	FA80MV FA100LV C80MV C100LV
	127	25	13	13	76	64	87	89	22.23	5"	1"	1/2"	1/2"	3"	2-1/2"	3-3/8"	3-1/2"	7/8"	
	152	32	16	16	104	86	93	112	25.40	6"	1-1/4"	5/8"	5/8"	4-1/8"	3-3/8"	4-5/8"	4-1/2"	1"	
	180	25	15	15	120	115	140	156	31.75	7"	1"	5/8"	5/8"	4-3/4"	4-1/2"	5-1/2"	6-1/8"	1-1/4"	
	205	35	18	18	95	86	135	145		8"	1-3/8"	3/4"	3/4"	3-3/4"	3-3/8"	5-3/8"	5-5/8"		
255	32	16	13	133	120	158	187	76.20	10"	1-1/4"	5/8"	1/2"	5-1/4"	4-3/4"	6-1/4"	7-3/8"	3"		
14-1	102	25	13	13	72	54			15.88	4"	1"	1/2"	1/2"	2-7/16"	2-1/8"				
	127	25	13	13	90	64				5"	1"	1/2"	1/2"	3-1/2"	2-1/2"			5/8"	
	152	45	16	13	80	99				6"	1"	5/8"	1/2"	3-5/32"	3-7/8"				

Note: Special Face(15° degree) may be supplied on request.